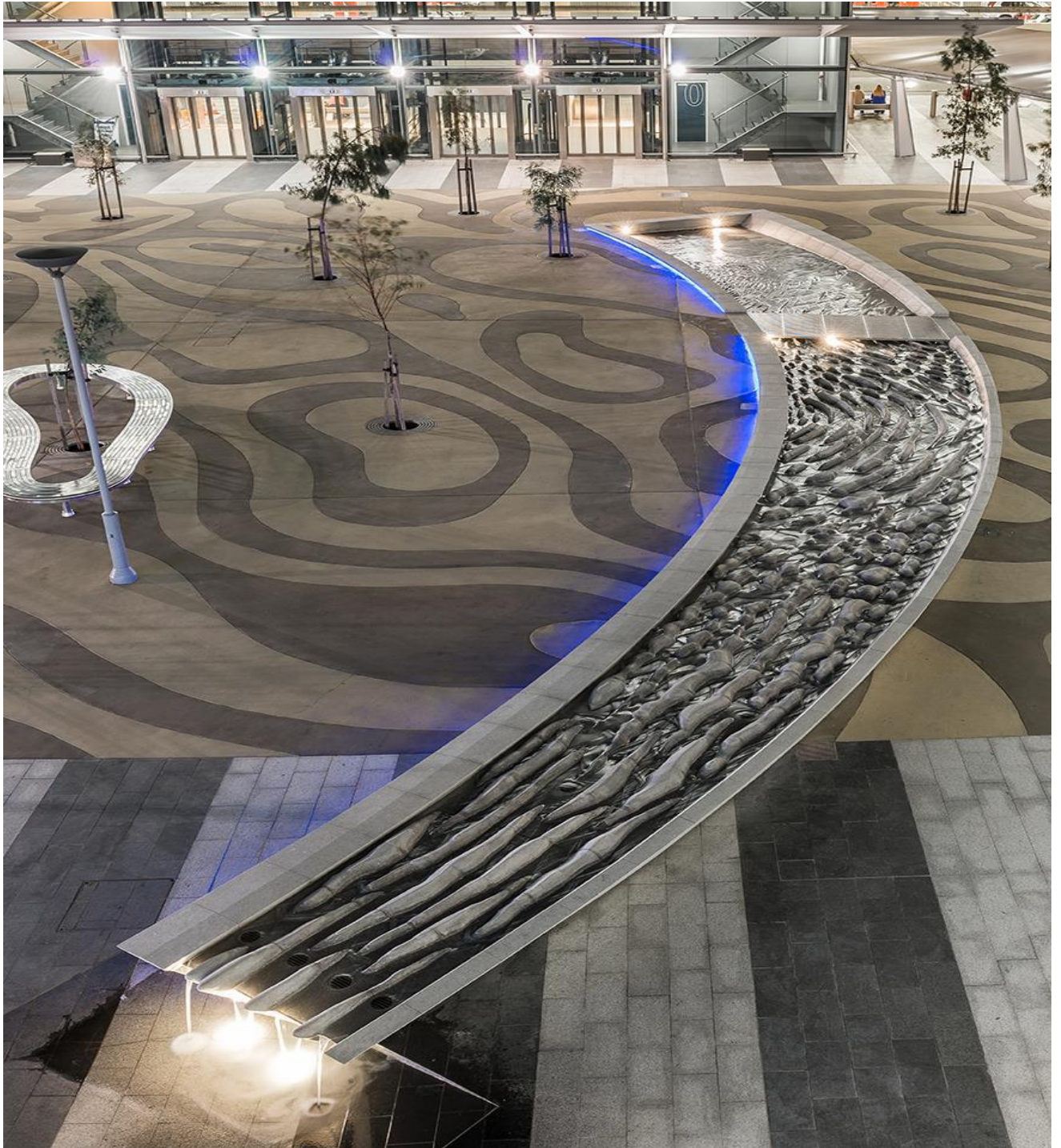

Guideline

Water Conservation



Why conserve water?

Water is a valuable resource, particularly in South Australia which is commonly acknowledged as the driest State in Australia. Water consumption attracts a tariff to promote water conservation, and better reflect the true cost of water collection, storage and water supply services. As the population increases and water resources become scarcer, we can expect greater increases in tariffs and stricter water restrictions. It is to your advantage to ensure you are water efficient and abide by any water restrictions in place. Water restrictions

Check with SA Water whether water restrictions are in place and whether you require an exemption for activities such as washing aircraft or vehicle washing.

Water saving tips

Incorporating the following water saving strategies into your company will not only conserve water but result in cost savings:

- Install water efficient equipment and fittings
 - Retrofit water-saving devices on existing toilets where possible
 - Fix leaks immediately
 - Regularly maintain tap washers, equipment and pipes
 - Turn off equipment wherever possible that uses water constantly
 - When cleaning, use a bucket to wash and rinse where possible, instead of running the taps or a hose
- Consider all ways in which water can be conserved and, where possible, monitor the amount of water consumed on individual uses
 - Discuss water conservation in staff meetings
 - Educate staff about the importance and benefits of saving water
 - Amend purchasing policies to prioritise water efficient items
 - Investigate alternate cleaning products such as micro-fibre technology that may be able to reduce water and chemical usage
 - If possible, use rainwater for fire water
 - Consider connecting to the airport's recycled water network to supply your irrigation network and/or toilets



- Only use the dishwasher when full
- Clean up any spillages by using spill response materials
- Use appropriate landscaping, mulching and choose native plants which are adaptable to dry climate



Case studies

Water Conservation at Adelaide and Parafield Airports

- Adelaide Airport receives recycled water from SA Water via a pipeline from the Glenelg Wastewater Treatment Plant. The recycled water is used for toilet flushing in Terminal 1 (T1) and for most irrigation across the airport.
- Parafield Airport is the location of a stormwater harvesting scheme operated by the City of Salisbury. A distribution network has been constructed to enable future developments to access recycled water.
- Drought tolerant plants have been used for landscaping around Terminal 1 and carpark
- Stormwater is captured from the roof of the Multi Deck Car Park which supplements the potable mains water supply to cooling towers
- SA Water is constructing a stormwater harvesting scheme on the southern side of Adelaide Airport to capture and treat stormwater from the Keswick and Brownhill Creeks. Supply points will be distributed around the eastern side of the airport



Further information

- Adelaide Airport Landscape Guidelines
- Parafield Airport Landscape Guidelines
- www.waterforgood.sa.gov.au
- www.sawater.com.au



Adelaide Airport Limited
1 James Schofield Drive
Adelaide Airport
South Australia 5950

T +61 8 8308 9211
F +61 8 8308 9311
Email: airport@aal.com.au

Parafield Airport Limited
Building 18, Tigermoth Lane,
Parafield Airport 5106

