
Guideline

Fuel Management



Scope

It is understood that certain amounts of fuel (namely unleaded petrol and diesel) are required to be stored on site by airlines and ground handling operators to fuel ground service equipment (GSE). These guidelines apply to the transfer of fuel from a mobile tanker to a bulk storage tank as well as the fuelling of GSE equipment from a bulk tank or mobile tanker.

Regulation and guidance

Fuel storage and handling activities on airport must meet these guidelines as well as the following requirements where relevant:

- SA EPA Guideline for Bunding and Spill Management 080/16 May 2016
- Australian Standard: The storage and handling of flammable and combustible liquids AS 1940-2017
- The Australian Dangerous Goods Code 7th Edition (ADG7.4)
- Adelaide Airport Environment Strategy 2014
- *Airports Act 1996*
- Airports (Environmental Protection) Regulations 1997

Fuelling locations

Seven designated fuelling points have been nominated by AAL (see attached map). No other areas are to be used for fuelling of equipment. Fuel should be stored in purpose built bulk storage tanks or small labelled containers kept in a flammables storage unit.

These points are located such that during fuelling operations no fuel tank filling points or vent outlets are:

- within 15 metres of any sealed building
- within 6 metres of stationary aircraft
- within 15 metres of any exposed public area (CAO Section 20.9)
- within 5 metres of an unsealed or grassed area.

Fuelling procedure

The following rules are to be complied with during fuelling:

- all fuelling shall occur during daylight hours
- all fuelling shall occur on hard stand (concrete or asphalt)

- all engines must be stopped and ignition switches in the “off” position
- smoking, use of mobile phones and other electronic equipment is prohibited within 3 metres of any fuel storage or refuelling activity
- there is to be no fuelling of GSE within 15 metres of a stormwater drain without adequate drain protection
- unleaded petrol is not to be transported or stored beneath Terminal 1
- fuelling is permitted along the T1 apron, however it must be undertaken at least 15 metres away from the T1 building including aerobridges
- bulk fuel storage tanks must be accompanied by proper signage, spill equipment and a fire extinguisher
- it is recommended that mobile tanker trailer spill kits contain enough absorbent socks to create a one metre barrier surrounding the entire trailer in the event of a spill
- all spills are to be cleaned up by a responsible company with the company held responsible for any pavement damage repairs
- braking systems of tanker trailers must comply with the *Road Traffic Act 1961* (SA) and subordinate legislation; which may require fitting of a breakaway system to prevent uncontrolled movement of trailers if they become uncoupled.

Compulsory Spill Reporting

All spills greater than 2L must be reported to the Airport Co-ordination Centre on 8154 9444.

References

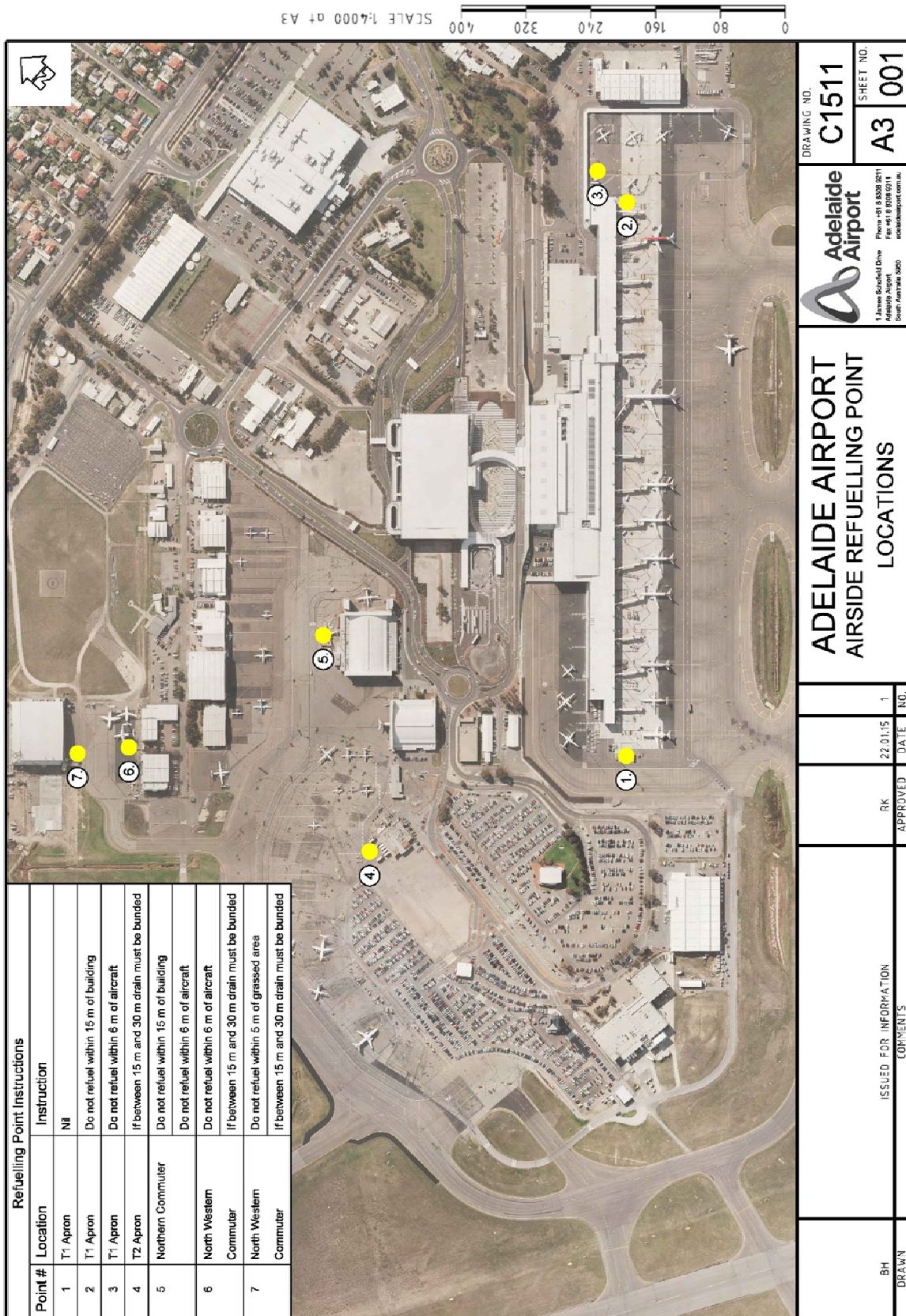
Civil Aviation Order (CAO) Section 20.9 – Air Service Operations - Precautions in Refuelling, Engine and Radar Ground Operations

Adelaide Airport Aerodrome Manual Standard Operating Procedure 12.1 – Handling of Hazardous Materials.

Road Traffic Act 1961

Department of Planning, Transport and Infrastructure. Light Vehicle Towing Trailer Regulations, Vehicle Standards Fact Sheet MR25

Figure 1. Adelaide Airport Fuelling Locations



Adelaide Airport Limited
1 James Schofield Drive
Adelaide Airport
South Australia 5950

T +61 8 8308 9211
F +61 8 8308 9311
Email: airport@aal.com.au

Parafield Airport Limited
Building 18, Tigermoth Lane,
Parafield Airport 5106

